

CRITEC® Community Antenna and Closed Circuit Television Protector

Features

- Robust high energy protection
- Compact package for limited space requirements
- Isolated ground – does not introduce unwanted noise
- The CATVHF is designed for high frequency applications in addition to indoor or outdoor installation - suitable for digital cable.

The Closed Circuit and Community Antenna Television range of surge protectors offers a variety of protection solutions for such applications. The CATV/CCTV surge protection range is designed to protect sensitive electronic equipment from damage due to voltage transients from either the direct or indirect effects of lightning or ground potential rise.



Model	CATVMF	CATVF	CCTV12	CATVHF
Item Number for Europe	702525	-	-	700746
Max Discharge Current, I _{max}	5kA 8/20µs	-	20kA 8/20µs	5kA 8/20µs
Frequency	1GHz	-	100MHz/16Mbits	2GHz
Attenuation	<0.5dB 47MHz - 860MHz	-	-	-1dB @ 1GHz -2dB @ 1GHz
Voltage Protection Level (8/20µs)	600V @ 5kA @ 500A	-	60V @ 500A	90V @ 500A
Dimensions H x D x W: mm (in)	70 x 17 x 17 (2.76 x 0.67 x 0.67)	78 x 17 x 17 (3.07 x 0.67 x 0.67)	90 x 28 x 22 (3.54 x 1.10 x 0.87)	96 x 31 x 63 (3.78 x 1.22 x 2.48)
Weight: g (oz)	26 (0.92)	30 (1.06)	60 (2.12)	115 (4.06)
Enclosure	Indoor		Outdoor	
Connection	RF 9.5 mm Coax (M/F) 120 mm (4.5") ground lead	F-Type, Female, 4.5 ground lead	BNC, Female	F-Type, Female
Mounting	In-line insertion			Screw mount
Temperature	-25°C to 70°C (-13°F to 158°F)			
Approvals	CE			

WARNING

ERICO products shall be installed and used only as indicated in ERICO's product instruction sheets and training materials. Instruction sheets are available at www.erico.com and from your ERICO customer service representative. Improper installation, misuse, misapplication or other failure to completely follow ERICO's instructions and warnings may cause product malfunction, property damage, serious bodily injury and death.

Copyright ©2008 ERICO International Corporation. All rights reserved.

CADDY, CADWELD, CRITEC, ERICO, ERIFLEX, ERITECH, and LENTON are registered trademarks of ERICO International Corporation.

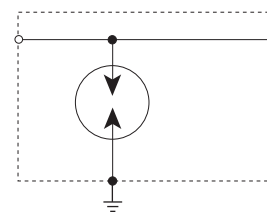


CRITEC® Coaxial Surge Protection

Features

- Simple plug-in installation
- Supplied with adjustable right angled grounded mounting block or flying lead ground.
- Low Insertion and Return Loss
- Wide Operating Frequency Spectrum
- Field serviceable, with replaceable gas arrestor

The Coaxial Surge Protector (CSP) family of surge diverters offers robust and reliable protection from transients on coaxial antenna RF feeder cables. They are comprised of a leadless gas arrestor housed in a chrome plated brass block. Careful design and precision machining has allowed the match between the characteristic impedance of the unit and the cable to be optimized. This attention to detail has resulted in a unit capable of operating at typical power and frequency levels of 900W and 3GHz respectively, while minimizing the insertion and return losses.



Model	CSPBNC90	CSPNMF90	CSPBNC600	CSPNMF600	CSPNB90	CSPNB600
Item Number for Europe	700360	700310	700405	700355	700410	700455
Frequency	DC to 3GHz typical					
Max Discharge Current, I _{max}	20kA 8/20µs					
Dimensions H x D x W: mm (in)	29 x 57 x 29 (1.14 x 2.24 x 1.14)				29 x 67 x 29 (1.14 x 2.64 x 1.14)	
Weight: kg (lbs)	0.2 (0.44)					
Enclosure	IP20 (NEMA-1)					
Connection	BNC, Male/Female	N-Type, Male/Female	BNC, Male/Female	N-Type, Male/Female	N-Type Female/Female	
Mounting	Removable mounting bracket and ground lead supplied 2 x 4 mm holes, 10 mm centers					
Approvals	CE					
Impule Life	400 impulses @ 500A 10/1000µs					
Insulation Resistance	10 GΩ					
Temperature	-40°C to 90°C (-40°F to 194°F)					
Capacitance	1.5 pF					
Spark Over Voltage @100V/us	450 V		1,100 V		450 V	1,100 V
Spark-Over Voltage @100V/s	72 V-108 V		480 V-720 V		72 V-108 V	480 V-720 V

Note: To select the appropriate protection voltage, use the following procedure:

1. Determine the transmitter power in Watts (P).
2. Determine the VSWR. If unsure, use 1.5.
3. $V_{peak} = VSWR \times 1.4 \times \sqrt{(50P)}$.
4. If $V_{peak} < 72V$, use CSP XXX 90.
If $V_{peak} > 72V$ and $< 480V$, use CSP XXX 600.
5. Taking this value of VSWR and allowing a little margin, this means that typically the 90V protector is used for Receivers and Transmitters up to 20W, while the 600W protector can be used for transmitters up to 900W.

NEMA is a registered trademark the National Electrical Manufacturers Association.

WARNING

ERICO products shall be installed and used only as indicated in ERICO's product instruction sheets and training materials. Instruction sheets are available at www.erico.com and from your ERICO customer service representative. Improper installation, misuse, misapplication or other failure to completely follow ERICO's instructions and warnings may cause product malfunction, property damage, serious bodily injury and death.

Copyright ©2008 ERICO International Corporation. All rights reserved.

CADDY, CADWELD, CRITEC, ERICO, ERIFLEX, ERITECH, and LENTON are registered trademarks of ERICO International Corporation.

